

# CALENDAR & GENERAL INFORMATION

	SUN	MON	TUE	WED	THU	FRI	SAT	
JANUARY				NASA Mars Rover on display	1	2	3	
	4	5 Afternoon Scholars Lecture	6	7 "Exploring Ethics" PLANETARIUM	8	9	10 "Meet the Inventor" Sat. Science Club for Girls	
	11	12	13	14	15	16	17 Family Science Day	
	18	19	20	21	22 "Science on the Rocks"	23	24	
	25	26	27	28	29	30	31 Giant Worlds OPENS	
	FEBRUARY	1	2 Afternoon Scholars Lecture	3	4 "Exploring Ethics" PLANETARIUM	5	6	7
8		9	10	11	12	13	14 Sat. Science Club for Girls	
15 Spanish IMAX Screening		16	17	18	19	20	21 Fam. Sci. Day "Supersonic" SD Symphony	
22		23	24	25	26	27	28	
"Fridays at the Fleet" Weekly IMAX Film Festival (6-9 p.m.)								

**HOURS:** Open 365 days a year. Doors open daily at 9:30 am.  
Building closes at:  
Mon-Thu: 5 pm; Fri: 9 pm; Sat: 8 pm; Sun: 6 pm

**ADMISSION:**

	ADULT (Ages 13+)	JUNIOR (Ages 3-12)	SENIOR (Ages 65+)
Exhibit Galleries:	\$10.00	\$8.75	\$8.75
1 IMAX® film + Exhibit Galleries:	<b>\$14.50</b>	<b>\$11.75</b>	<b>\$11.75</b>
The Sky Tonight Planetarium Show:	<b>\$10.50</b>	<b>\$9.00</b>	<b>\$9.00</b>
Motion Simulator Ride:	\$5.00 for all ages		

**ADDRESS:** 1875 El Prado, San Diego, CA 92101  
Located in beautiful Balboa Park, just two blocks south of the Zoo.



## JANUARY/FEBRUARY 2009

### WHAT'S NEW AT THE FLEET?

**EVENTS**



**WHAT: Int'l Year of Astronomy**  
Planetarium shows are back & NASA's next Mars rover lands.  
**WHEN: Wednesday, January 7**

**EXHIBIT**



**WHAT: "Giant Worlds"**  
Explore the outer solar system right here in San Diego. (pg 4)  
**WHEN: Saturday, January 31**

**EVENT**



**WHAT: Science on the Rocks**  
Leave the kids at home and see a different side of the Fleet. (pg 7)  
**WHEN: Thursday, January 22**

### MEDIA CONTACT:

**Jeremy Pyle,**  
Public Relations Manager  
PHONE: (619) 685-5743  
E-MAIL: [JPyle@rhfleet.org](mailto:JPyle@rhfleet.org)

### ON THE WEB:

For news releases, high-res images & more, visit our online media room:  
[www.rhfleet.org/media](http://www.rhfleet.org/media)

### In this issue:

IMAX® Films	2
Planetarium Shows	3
Hands-on Exhibits	4
Education Programs	6
Special Events	7
Calendar & Information	8

#### KEY TO SYMBOLS USED INSIDE:

: Video (B-roll) available : High-res images available : Interviews or science demos available

## NOW PLAYING IN THE IMAX DOME

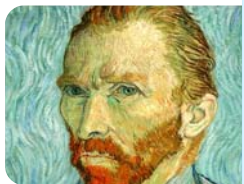


### WILD OCEAN

**WILD OCEAN** is an explosive, symphonic film about man and nature that captures one of the world's greatest spectacles. Each year a massive feeding frenzy takes place in the oceans off South Africa as billions of fish migrate up the KwaZulu-Natal Wild Coast. Breaching whales, frenzied sharks, herding dolphins, and diving gannets compete in an epic underwater struggle for survival. **WILD OCEAN**

**RUNS:** Dec 13, 2008 — Spring 2009  
**LENGTH:** 40 min **RATING:** Unrated  
**MEDIA RESOURCES:**

recently received the Giant Screen Cinema Association's prestigious Achievement Awards for Best Original Score and Best Sound Design.



### VAN GOGH: Brush with Genius

Plunge into the heart of Vincent van Gogh's paintings and take a journey through the surprisingly short period of the artist's career, during which he completed more than 900 paintings. **VAN GOGH** follows in the artist's footsteps, traveling from the

**RUNS:** Dec 13, 2008 — Spring 2009  
**LENGTH:** 40 min **RATING:** Unrated  
**MEDIA RESOURCES:**

Netherlands to Auvers-sur-Oise then passing through Arles, Saint-Rémy and Paris. Discover the fantastic colors and distinctive brushwork of a genius.



### ANIMALOPOLIS

Singing lions, bears that waltz, sea lions turning somersaults. Otters pray, flamingos squawk, a calf who'd rather dance than walk. With 12 hilarious musical segments, each featuring a different animal,

**RUNS:** Dec 13, 2008 — Spring 2009  
**LENGTH:** 32 min **RATING:** Unrated  
**MEDIA RESOURCES:**

**ANIMALOPOLIS** takes a lighthearted and imaginary look at the animal kingdom and provides kids and their adults with a journey of smiles and chuckles.

IMAX® is a registered trademark of IMAX Corporation.

## SPECIAL EVENTS & PUBLIC PROGRAMS

### Inventors' Day at the Fleet

Meet toy inventor Mark Rappaport of Marky Sparky Toys and learn about the creative process of invention with fun live performances. Then, work side-by-side with the inventor to create your very own launch pad rocket and recyclable piñata in the Fleet's "Tinkering Studio."

**DATE:** Saturday, January 10 **TIME:** 12–4 p.m.  
**PRICE:** Free with admission.

### Science on the Rocks

The Fleet's new quarterly social event for young professionals, with cocktails and special themed activities in a fun, relaxed setting. January's event is titled "California Thrill Ride Edition," and includes a special screening of the popular film **ADVENTURES IN WILD CALIFORNIA** in the Fleet's renovated IMAX Dome Theater as well as the construction of miniature roller coasters in the "Tinkering Studio."

**DATE:** Thursday, January 22 **TIME:** 6–9 p.m.  
**PRICE:** \$20 **AGE:** This event open to ages 21+ only

### "Supersonic" with the San Diego Symphony

Members of the San Diego Symphony visit the Fleet for a fun and interactive journey through the science of sound. "Supersonic" will feature two live symphonic presentations interspersed with fun sonic science demonstrations. In addition, children will be able to try various orchestral instruments in a "musical petting zoo," and build their own instruments in the Fleet's "Tinkering Studio."

**DATE:** Saturday, February 21 **TIME:** 11 a.m.—2 p.m.  
**PRICE:** Free with admission



The Reuben H. Fleet Science Center seeks to inspire lifelong learning by furthering the public understanding and enjoyment of science and technology.

## MONTHLY EDUCATION PROGRAMS

### Senior Mondays (“Afternoon Scholars”)

Held on the first Monday of every month, **Senior Mondays** let guests age 65 and older enjoy our exhibit galleries, one IMAX film and an **“Afternoon Scholars”** lecture for only \$6.

**PRICE:** \$6/person (age 65+)      **LECTURE TIME:** 12:30–2 p.m.

#### LECTURE TOPICS:

**Jan. 5:** “Biodiversity”    **Feb. 2:** “Scientific Technologies to Explore Art”

### “Exploring Ethics” - Monthly Lecture Series

The Fleet Science Center and Center for Ethics in Science & Technology co-host this monthly panel discussion, featuring experts from different fields discussing ethical challenges raised by new developments in science and technology.

**PRICE:** Free      **TIME:** 5:30–7 p.m. (1<sup>st</sup> Wednesday of every month)

#### PANEL DISCUSSION TOPICS:

**Jan. 7:** “Race and Culture in Medicine”    **Feb. 4:** “Evolution”

### Saturday Science Club for Girls

Fun and challenging activities for girls (grades 5–8), as well as presentations by local women scientists. Each month’s workshop focuses on a specific field, such as biology, robotics, astronomy, ecology and more!

**PRICE:** \$12/person      **TIME:** 12–2 p.m. (2<sup>nd</sup> Saturday of every month)

#### SCIENCE TOPICS:

**Jan. 10:** “Secrets of Squid”    **Feb. 14:** “Aerospace Challenge”

### Family Science Day

**Family Science Day** offers fun hands-on activities that children and adults can explore together. Come make a science experiment that you can take home with you! All materials included free with admission

**PRICE:** Free with admission.    **TIME:** 12–3 p.m. (3<sup>rd</sup> Saturday of every month)

#### SCIENCE TOPICS:

**Jan. 17:** “Rockets”    **Feb. 21:** “Sound”

## EVENTS INSIDE THE SPACE THEATER

### FRIDAYS AT THE FLEET



**Fridays at the Fleet** is our weekly IMAX film festival. Visitors can enjoy up to four films (6:00–9:00 pm) in the IMAX Dome for a big discount. See one film for \$8.50 and up to three additional films for only \$5 each! A mix of “classic” IMAX films from our archives and current films are shown.

#### FRIDAY NIGHT FILM SCHEDULE

**JAN. 9, 16, 23, 30:** 6 pm: *MYSTERIES OF EGYPT*    7 pm: *ALASKA*  
8 pm: *WILD OCEAN*    9 pm: *VAN GOGH*

**FEBRUARY:**    *TBD—Check Web site for schedule*

### SPANISH-LANGUAGE IMAX® FILMS

Starting in February, the Fleet Science Center will offer a Spanish-language IMAX film screening at 6 p.m. on the third Sunday of each month.

**FEBRUARY 15, 2009:** 6 pm: *WILD OCEAN*

### PLANETARIUM SHOWS RETURN!

Just in time to celebrate the start of International Year of Astronomy 2009, our monthly planetarium show, *The Sky Tonight*, is back in the newly renovated Space Theater! Featuring a digital tour of San Diego’s night sky in California’s largest planetarium, *The Sky Tonight* is perfect for “backyard astronomers” or anyone trying to find their way around the universe. Each month’s live show also explores a different topic in astronomy. The San Diego Astronomy Assn. also offers telescope viewing outdoors (weather permitting) after the planetarium show. This is a separate, free event.



**DATES:** **Jan. 7 and Feb. 4**      **TIMES:** 7:00 p.m.

**TOPICS:** **JANUARY 7:** “Top Astronomy Stories for 2008 and 2009”  
**FEBRUARY 4:** “The Constellations of Winter”

**PRICE:** Adults: \$10.50; Juniors & Seniors: \$9.00

# HANDS-ON SCIENCE EXHIBITS & ATTRACTIONS

## TRAVELING EXHIBITIONS

NEW



### "Giant Worlds"

Explore the extraordinary giant planets orbiting our Sun and discover what they tell us about the formation of planetary systems, Earth, and the conditions necessary for life. Learn about the formation of our Solar System and the role that gravity plays in how planets, asteroids, and comets behave. This exhibition also presents the beauty and mystery of the giant planets, through 20 colorful, interactive exhibits designed for cosmic explorers of all ages.

RUNS: **Jan. 31—May 3, 2009**

MEDIA RESOURCES:



### SPECIAL EXHIBIT: New NASA Mars Rover

On loan from JPL, the full-sized prototype for NASA's upcoming **Mars Science Laboratory Rover** (launch slated for 2011) lands at the Fleet on **January 7!** Students in grades K-12 can enter a contest to name the actual rover & win a trip to JPL!

**January 7—February 4, 2009**



### "Tinkering"

"Tinkering" features more than 20 hands-on exhibits that bring out your "inner inventor" with pulleys, electrical circuits, turntables, paper airplanes, bicycle wheels, wind tunnels, animation systems and much more. Plus, a large "Tinkering Studio" lets kids transform household items into catapults, robots, spectroscopes, mechanical toys and other novel creations. *(Bilingual)*

RUNS: **Jun. 21, 2008—Jun. 7, 2009**

MEDIA RESOURCES:

## PERMANENT EXHIBITIONS



### "So WATT! An Illuminating Look at Energy"

Find out how solar panels generate electricity, compare renewable vs. non-renewable energy sources, and discover simple yet effective ways to conserve energy at home or work. *(Bilingual)*



### "Kid City"

From the Factory to the Grocery Store to the Book Nook, younger visitors (infants through age five) create, play and learn as they experience the wonders of the everyday working world in this colorful, interactive exhibit space. *(Bilingual)*



### Exploration Bar

Watch exciting live science demonstrations or pull up a chair and get your hands on scientific phenomena such as magnetism, light and sound. Activities take place daily and are included free with paid Science Center admission. *(Bilingual)*

ALSO: • "Aging for All Ages" • "Gallery of Illusions and Perceptions"

## MOTION SIMULATOR RIDE



### "Escape from Dino Island"

Now playing in our 23-passenger motion simulator ride: "Escape From Dino Island." Join an urgent mission to capture the only remaining male T-Rex in the world, before the volcano erupts and takes out all remaining life!